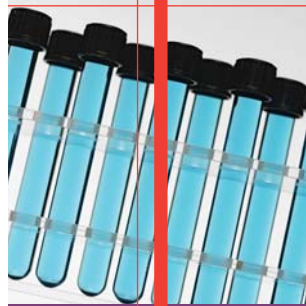


2005 ANNUAL REPORT



Chair's Message



The AALAS Foundation supports educational outreach on the essential role of responsible laboratory animal care and use in science to advance human and animal health. Our goals for the future are to increase the programs that the Foundation supports as well as build the Foundation's financial position to allow for support of additional public outreach and educational programs.

It is the generous donations of our contributors that have allowed the Foundation to build its financial position and support the outstanding public outreach and educational programs about responsible laboratory animal care and use. The Foundation funded several grant requests this year geared towards public outreach. A large grant was provided to support North Carolina Association for Biomedical Research's (NCABR) program, Living Proof: Senior Faces of Research, a documentary video project to educate the public about the personal impact on senior citizens of animal-based biomedical research. Additional funds were provided to support outreach to teachers, and ultimately their students, by exhibiting at a number of education related conferences.

We hope your interest in the AALAS Foundation will continue through promoting the mission of the Foundation to your peers, using our available materials in your personal public outreach efforts, and working with us in the future to bring about new initiatives in public outreach and education.

Your investment in your future and the future of laboratory animal science will not go unnoticed. This publication gives us the opportunity to say thank you for your continued support of and dedication to the AALAS Foundation.

Jeff Easley,
Chair, AALAS Foundation Board of Directors

"It's Not a Donation. It's an Investment in Your Future."



Mission Statement

The AALAS Foundation supports educational outreach on the essential role of responsible laboratory animal care and use in science to advance human and animal health.

Executive Director's Message



2005 was a stellar year for the AALAS Foundation. The Foundation approved the funding of grants to various organizations in the amount of \$134,195. These grants will be used to provide funds to educate the public—of all ages—about the many benefits derived from animal research and to make people aware of the various careers available in the field of laboratory animal science.

Through the AALAS Foundation, several thousand children have been reached through the Kids-4-Research website (www.kids4research.org) and print materials that tell the story of animals and their contribution to research. Biology, agriculture, and science teachers have been provided materials and guidance about how to convey the truth about animals used in research to their students. Thousands more of all ages have been made aware of the essential role of using animals to advance science and biomedical research through the Foundation's support of projects conducted by other entities, such as the Survivors campaign by the Foundation for Biomedical Research (FBR) and the Living Proof: Senior Faces of Research project by the North Carolina Association for Biomedical Research (NCABR). The Foundation continues to gain recognition as a major force in the effort to educate the public about the responsible care and use of animals in the research setting. In early June 2006, the Foundation Board of Directors will meet and review seven new grant applications for consideration of funding.

The Foundation's fundraising program was very successful in 2005 with a total of 446 contributors, including 56 institutions or companies, 18 AALAS branches, and 372 individuals. The collective financial support to advance public outreach initiatives and education efforts is gratifying. In addition, hundreds of National Meeting attendees supported the Foundation through contributions to the Silent Auction, cash donations at the Foundation Booth, and bidding on items from the auction.

Make plans to stop by the Foundation booth during the 2006 National Meeting in Salt Lake City; there will be "treasures" available for bidding through the Silent Auction. Also, be sure to attend the AALAS Foundation Appreciation Reception on Wednesday night, October 18, 2006 where the Live Auction will return to the program this year. This event has always been one of our more popular social activities during the National Meeting.

On behalf of John McCutchen, Sheryl Duncan, Jill Worley, Jenny Ferloni, Betty Cartwright, John Farrar, and the other AALAS staff who provide support for the Foundation, thank you for your commitment.

Sincerely,

Ann Tourigny Turner, PhD, CAE
Executive Director, AALAS & AALAS Foundation

2005/2006 AALAS Foundation Board of Directors

Directors-At-Large

Michael A. Coiro, Sr.
CEO, Allentown Caging Equipment Co., Inc.

Helen E. Diggs, DVM
Director, Univ. of California-Berkeley

Jeff Easley
2005 Chair, AALAS Foundation
Marketing Director, Harlan

George S. Gabriel
CEO, Lab Products, Inc.

Robert K. Jackson, DVM
Director, Bristol-Myers Squibb

Charlie Kammer
Retired Sales Representative

M. Lynn Loney, MS, RLATG, RVT
Consultant, Bayer Crop Science LP

Cynthia A. Pekow, DVM
Chief, Veterinary Medical Unit, VA Puget Sound Health
Care System

Scott E. Perkins, VMD
Director, Tufts – New England Medical Center

Kenneth B. Shapiro
2005 Vice Chair, AALAS Foundation
National Sales Manager, Pharmacal

Dennis M. Stark, DVM, PhD
Executive Director, Veterinary Sciences, Bristol-Myers
Squibb

U. Kristina Stephens, MA, LATG
Management Consultant

AALAS Board of Trustees Representatives

Jack R. Hessler, DVM, Secretary/Treasurer

Ralph E. Hornickel, BS, RLATG, AALAS BOT
Facilities Manager, University of Louisville

Valeri Lansford, RLATG, AALAS BOT
Lab Sales Consultant, Edstrom Industries, Inc.

Legal Counsel (ex officio)
Tom Boerschinger
Attorney-at-Law, Alan Amos & Associates

Executive Director AALAS & AALAS Foundation (ex officio)

Ann Tourigny Turner, PhD, CAE

Staff

John McCutchen, CAE, Staff Liaison
Sheryl Duncan, Development Specialist
Jill Worley, Community Services Coordinator

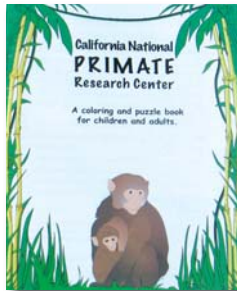
AALAS Foundation Projects and Programs Supported During 2005

Public Outreach

The AALAS Foundation contributes to the public's awareness of ethical issues in the use of animals and the advances made that help both animals and people. There has been an ongoing educational effort, with particular emphasis on schools, to inform the public about the knowledge gained through the use of animals in research.

Living Proof: Senior Faces of Research—The AALAS Foundation is participating in funding this documentary video, developed and produced by the North Carolina Association for Biomedical Research (NCABR), to improve the public's awareness of the contribution of animal-based research to human health. Through written stories and news articles, the video is designed to showcase the remarkable benefits of biomedical research to the improvements in the health of this nation's senior citizens (those ages 55 and older) and provides Americans with a personal connection to and the related contributions of animals made possible as a result of animal-based, biomedical research.

Coloring Book of Nonhuman Primates—The AALAS Foundation participated in funding this coloring book, developed and produced by the California National Primate Research Center (CNPRC), as an educational outreach tool for elementary-age students. The focus of the book is the importance of the use of nonhuman primates in biomedical research. It also covers a wide range of animals used in research and includes research programs from all of the National Primate Research Centers across the country.



Survivors—Phase 2—Building on the success of the Foundation for Biomedical Research's first program of this type, Survivors—Phase 1 (which assisted practicing animal veterinarians in educating pet owners about the vital role research plays in prolonging the health and life of their pets), this phase expands the core message to include equine medicine and to actively engage large animal veterinarians. The program will continue to educate and enlighten Americans about the vital contributions being made by laboratory animal medicine.



"Together for Life...Every Day of the Year" Classroom Calendar—A joint project of Millennium Pharmaceuticals Inc. and the AALAS Foundation, this full-



color, two-sided 17-inch by 33-inch calendar/poster is an attractive, multi-purpose outreach tool for students and teachers in grades 6-10. The calendar's objectives are to increase awareness of the benefits people and animals receive from medical research using animals, pique curiosity about current issues within the biomedical research field, and teach students more about laboratory animals and the magnificent contributions they have made to our lives.

"Learning to Care" Poster—The full-color poster promotes stewardship, responsibility, and respect for animals used in any classroom environment—from third-grade level through college. The one-sided poster displays images of animals common to a classroom and has colorful photos of students interacting with animals in a classroom environment.

Reach Out! Toolbox—Distributed during the AALAS National Meeting in Tampa in October 2004 and then made available through the AALAS and AALAS Foundation websites, the Reach Out! Toolbox materials offer motivation and encouragement for AALAS members interested in learning how to reach out to the public about biomedical research using animals. The contents provide AALAS members with tools and resources they need to conduct successful public outreach sessions within their communities and supply guidelines for planning, organizing, and conducting an Animal Research Fair at the facility or branch and district meetings.

Outreach at Teacher Conferences—During 2005, AALAS staff exhibited at the annual meetings of the National Science Teachers Association (NSTA), National Association for Biology Teachers (NABT), American School Counselors Association (ASCA), Future Farmers of America (FFA), National Association of Agricultural Educators (NAAE), Association of Veterinary Technician Educators (AVTE) and the Association of Career Technical Educators (ACTE) to provide teachers and students with educational and informational resources promoting the awareness of research animal care and the benefits of biomedical research.



"Quality Animal Care Equals Quality Science" Note Cards—The AALAS Foundation funded the production of these 4-inch by 5-inch note cards featuring four different full-color animals used frequently in biomedical research. Each card contains positive messages about animal research and its

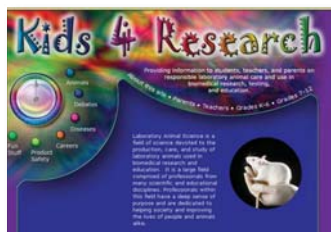
benefits to society as well as medical breakthroughs specific to each of the animal species. The cards, which are appropriate for any occasion such as birthdays, thank-yous, and get well greetings, are the perfect way to educate the public about the use of animals in biomedical research.

“Appropriate Lab Animal Care and Use Advances Medical Science” mailing labels—The AALAS Foundation designed and produced these sheets of one-inch, self-adhesive mailing labels available at no cost in small quantities. The Foundation’s web address is included. It is hoped that the use of the labels by our contributors on their business and personal mailings will promote our message.

Public Outreach for School-Aged Children—With a renewed \$10,000 grant from Pharmacal Research Laboratories, the AALAS Foundation supports projects directly reaching students in the classroom.

Experimental Biology (FASEB), AVMA, Neuroscience, and Society of Toxicology National Meetings—Over the past few years, AALAS exhibited at the annual meetings of these organizations and displayed Foundation-supported public outreach materials. The attendees were researchers, scientists, and veterinarians from around the world, many of whom have public outreach interests, as well as a need for outstanding materials to use in their efforts.

Kids 4 Research Website—Funded with a renewed \$100,000 grant from Charles River Laboratories, the website (www.kids4research.org), provides age-appropriate material, including educational games, activities, and graphics. It is widely used by teachers and others



to stimulate interest and understanding about laboratory animal science. All public outreach materials produced by the AALAS Foundation are PDF files and can be downloaded by anyone at any time.

Careers

As strides are being made in research laboratories across the country, it becomes increasingly more important to attract talented students to the laboratory animal science field. The AALAS Foundation endeavors to help students explore careers in the field with two projects.

Accept the Challenge to Care—This video module, funded by an \$80,000 joint grant from Novartis Pharmaceuticals, Inc. and Novartis Institute for Biomedical Research, Inc., includes a video, student brochure, and curriculum guide designed for teachers at the middle and high school level. The video promotes career opportunities in the field of laboratory animal care and biomedical research. It is available to schools at no cost through AALAS. Thousands of these video modules have been distributed at science teacher meetings over the past few years.

“Careers in Biomedical Research” Brochure—A joint project between the California Society for Biomedical Research and the AALAS Foundation, this comprehensive brochure will cover a wide range of career options in biomedical research. The objectives of the brochure are to encourage youth to seek careers in biomedical research, to educate teachers and counselors about career options, and to promote an awareness of animal research and its benefits. This brochure will be distributed as part of the Accept the Challenge to Care careers video program.



Education and Training

Knowledge has advanced rapidly within the field of laboratory animal science, and it is essential to provide personnel with educational programs and materials to keep them well trained and to enhance the level of research being performed in the laboratory. Toward that, the AALAS Foundation has supported education and training with these programs.

AALAS Learning Library (ALL) Web-Based Training—Funded by a \$125,000 grant from Merck & Company, Inc., AALAS is developing web-based training courses on animal research bi methodologies for common laboratory animal species on the AALAS Learning Library (www.aalaslearninglibrary.org). The course design will focus on delivering brief vignettes with streaming video presentations, which will allow learners to focus on training related to specific procedures of interest. A script for a course currently is under development titled, Working with the Laboratory Rat. The course will cover topic areas such as regulatory requirements, routine care, animal identification, intravenous injection, blood collection, anesthetics and analgesics, clinical signs of illness, and euthanasia. The course will be structured similar to the Working with the Laboratory Mouse course that is currently on the AALAS Learning Library.

CD-ROM Interactive Software Training—With a \$100,000 grant from Merck & Company, Inc., the CD-ROMs to accompany the ALAT Training Manual, the LAT Training Manual, and the LATG Training Manual were produced in 2000, 2003, and 2005, respectively. After the completion of the ALAT Interactive CD, the Educational Resources Committee (ERC) designed a new approach for



this family of training manuals related to CDs. The CD-based training courses (referred to as companion CDs) allow individuals to work through the manual at their own speed, answer questions about each section, work through case studies, and review material as often as needed. The companion CD format includes an audio-recording of the manual as a narration, and the audio tracks are used on the CD and will be used on the web (LAT courses on the AALAS Learning

Library). The ERC revised the ALAT Interactive CD based on the companion format and released the ALAT Companion CD in August 2004.

Elizabeth R. Griffin Foundation: Zoonosis Training—The AALAS Foundation and AALAS partnered with \$60,000 funding from the Griffin Foundation to provide readily accessible training via video/web training to research



staff working with laboratory animals, as it relates to prevention of nonhuman primate-related zoonotic diseases. The training module uses monkey-borne B virus as an example of a zoonotic disease, with other agents of animal-borne transmissible diseases and allergies also covered. Videotaping and the narration were completed in January 2004 at the University of Texas Health Science Center and MD Anderson Cancer Center in Houston. The

final product was completed in February and is now available in two formats, DVD or VHS, and is offered at no charge upon request within the US. The course Health Risks and Safety Procedures for Working with Nonhuman Primates went on-

line on the AALAS Learning Library in March 2004 after the course was enhanced with content additions and images produced from the video footage.

Request for Proposals (RFPs)—In an effort to serve its mission and the laboratory animal science community, the AALAS Foundation developed an RFP to attract proposals that:

1. are designed to implement an innovative educational/outreach program
2. enhance awareness and understanding of animal welfare and care in laboratory settings
3. have a purpose, activities, and products that focus on a specified population (e.g., research scientists, science journalists, home-school teachers, research administrators, physicians, or research foundations) who are perceived to be neutral to animal-based research but who are opinion leaders within the greater society.

The AALAS Foundation expects to award funds to at least one or two outstanding proposals per year.

Financial Statement

Assets

Current Assets

Cash	\$139,618
Pledges Receivable (current portion)	\$162,250
Prepaid Expenses	\$2,319
Investments	\$672,096
Pledges Receivable (less current portion)	\$285,670

Liabilities and Net Assets

Current Liabilities

Due from/to AALAS	\$5141
Grants Payable	\$30,500

Net Assets

Unrestricted	\$662,220
Temporarily Restricted	\$362,504
Permanently Restricted	\$241,588

2005 Contributors to the AALAS Foundation

The AALAS Foundation gratefully recognizes these companies, organizations, branches, and individuals that made financial commitments or contributions to the future of laboratory animal science during 2005.

Patron Corporate Contributors

Our special thanks to the companies, organizations, and branches that renewed a gift or five-year pledge at the current or higher recognition level. These donors are our current AALAS Foundation Patron Corporate Contributors.

Patron Founders (\$100,000+)

American Association for Laboratory Animal Science
Charles River Laboratories*
Merck & Co*

Patron Benefactors (\$50,000+)

Lab Products*
Taconic*

Patron Supporters (\$25,000+)

BioMedic Data Systems*
Bristol-Myers Squibb*
Edstrom Industries*
GlaxoSmithKline Pharmaceuticals R&D
Life Science Products*
Priority One Services*

Patron Friends (\$10,000+)

Allentown*
Andersons/Bed-o'cobs*
Marshall BioResources*
Pharmaceutical Research Laboratories*
Purina Mills*

Patron President's (\$1,000+)

Metro New York Branch
National Capital Area Branch
New England Branch*

Corporate Contributors

Our sincere appreciation to the companies, organizations, and branches that made a gift or five-year pledge of \$1,000 or more. These donors are our current AALAS Foundation Corporate Contributors.

Benefactors (\$50,000+)

SoBran*

Supporters (\$25,000+)

Harlan*
Novartis Institute for Biomedical Research (NIBRI)*
Tecniplast USA*

Friends (\$10,000+)

Ancare Corporation*
BH*
Elm Hill Breeding Labs*
Millennium Pharmaceuticals*
Pfizer Global R & D Worldwide Comparative Medicine
Quip Laboratories*
Thoren Caging Systems

President's (\$1,000+)

3M Health Care
A.K. Roseberry & Associates*
Animal Specialties & Provisions*
Appalachian Branch*
BIOCON*
Bio-Serv*
Bristol-Myers Squibb
Buxton Medical Equipment Corp.*
Cedar Creek AME*
Delaware Valley Branch*
Dick Burnham Technical Sales*
Florida Branch*
Kentucky Branch*
Louisiana Branch*
Lynx Product Group
Mid-South Branch*
Minnesota Branch*
New Year Tech
San Diego Branch*
Southern Ohio Branch
Summit Anesthesia Solutions*
Texas Branch*
Total MRO*
Tuttner USA*

Special Corporate Supporters

We would like to thank the following companies who worked with the Foundation in 2005 through their support of special events and activities.

AALAS Foundation Reception Sponsor
Harlan

*Indicates five-year pledge

Annual Contributors

Our sincere appreciation to the companies, organizations, and branches that made a gift or five-year pledge of up to \$999 and to the individuals who made gifts or five-year pledges of any amount. These donors are our current AALAS Foundation Annual Contributors.

Patron President's Individual Contributors (renewing a gift or 5-year pledge of \$1,000+)

M Lynn Loney*
Dennis Stark*

President's Individual Contributors (\$1,000+)

Ron Berger*
Dawn Conover*
Patricia L Denison
Jeff Easley*
George S Gabriel
Gary P Goldberg
Robert K Jackson*
Todd A Jackson
Valeri Lansford*
Beth Page*
Scott Perkins*
Ken Shapiro*
Judy Snow*

Platinum Contributors (\$500-999)

Deb Benner*
B Taylor Bennett*
Tom Boerschinger*
Ken Boschert*
William Clarke*
Thomas Cline*
Wayne DeSantis*
Deb Donohoe*
Sonia Doss*
Betty Fatzie*
Craig S Frisk
Pam Grabeel*
Judy Grisamore*
Christie Hart*
Gail Heidbrink*
Jack Hessler*
Margaret Hogan*
Ralph Hornickel*
George Irving*
Robert K Jackson
Bruce Kennedy*
Stacy LeBlanc*
Michael McGarry*
Jack R McGinley

Leticia McGuffey*
Ron McLaughlin*
Laura Mistretta*
Kathleen A Murray
Karen Norton*
Cynthia A Pekow
VH "Chip" Price*
Lisa Secrest*
Richard Simmonds*
Carol St Jean*
U Kristina Stephens*
James Taylor*
Johann CF Thiel
Ann Turner*
William Webster*
Marc Willis*
Dexter Wilson*
John Young*
Ken Robbins Productions
sanofi-aventis Malvern
Upstate New York Branch*

Sterling Contributors (\$100-499)

Lynn C Anderson
Michael B Ballinger
Margaret Batchelder
Curtis Black*
Sharon A Cugle
Fred A Douglas
Jeff Easley
Heidi A Dulac
Jerry Fineg
Amy S Ingraham
George W Irving III
J Malcolm Kling
Chris Lyons
Jayne Mackta*
Brent J Martin
Ann L Murray
Kho V Nguyen
Lisa M Rehm
Darlene Royce
Richard C Simmonds
J David Small
Dennis M Stark
Mark A Suckow
Greg P Sykes
Sue VandeWoude

Robert H Weichbrod
Samantha P Winslow
Ancare Corporation
Central Ohio Branch
Delaware Valley Branch
Edstrom Industries
Priority One Services

Contributors (\$1-99)

Janet F Baer
Doreen H Bartlett
Mary K Hagler
Brenda P Hill
Christopher S King
Christian E Newcomer
Joseph T Newsome
John C Rogers
Ardis K Roseberry
Cathie S Adams
Kevin R Armstrong
Timothy Lee Barnett
Samm C Bartee
Amy B Bartholomew
Lucretia M Batten
Stephen Benigni
Bob Bentzinger
Diana M Berger
Pamela C Berger
Curtis A Black
Terry L Blasdel
Ruth Blauwiel
Susan R Blumenthal
Ramona Bober
Thomas H Boerschinger
Donald Bordine
Joseph S Brachmann
David W Brammer
Lisa J Brown
Britt M Callahan
Hazel R Carpenter
Richard Cavallaro
Cheryl P Clark
Penny A Cloutier-Lyons
Daria O Cloyd
Richard S Cluck
Vinnie Coiro
Kelly E Cole
Todd A Collins
Barbara A Collins

*Indicates five-year pledge

Faith W Conkle
Regina M Correa-Murphy
Theresa M Cunningham
Clara Cinzia Desiderio
Helen E Diggs
David J Disselhorst
Bernard J Doering
Marlene D Drag
Julia B Drake
Dee Drye
Cheryl Dudley
Heidi E Duffy
Levi M Dysinger
Robert C Dysko
Jeff Easley
Kimberly S Edgar
Desiree A Ehleiter
Javelyn R Evans
Karl J Field
Linda J Frederick
Genevieve Fridland
Robert Gagne Jr
Marisa Garza-Schmidt
David E Gemmell
Vicki Giroffi
Adam Goedde
Donna L Goldsteen
Catalina M Guerra
Barry V Hamory
Victoria Hampshire
Susan M Hart
Christie L Hart
William L Heckt
Jack R Hessler
Timothy B Hidell
Dale A Hinderaker
Paul W Hinds
Laura A Hoffman
Cindy M Hoorn
Ralph E Hornickel
Chandra Inglis
Christine S Jackson
Veronica M Jennings
Mary Bernetta Jindra
Patrice Johnson
David A Johnson
David K Johnson
Cornelia L Jones
Charlie Kammer
Beverly A Keniston
Kari L Koszdin
Masahiko Kusanagi
Jane Wall Lacher

Maria T Lang
Valeri Lansford
George W Lantrip
Charles W Leathers
Stacy A LeBlanc
Robert W Lemken
Tracy A Lewis
Jeffery G Linebaugh
Edward W Linke
M Lynn Loney
Dorothy Loud
Stanley Lucas
Debra D Lust
Frank E Lynch
Jayne Mackta*
Sean Maguire
Timothy D Mandrell
D Scott McConnell
Irving W McConnell
John E McCutchen
Doug McDonald
Leticia H McGuffey
Carol S Mead
Scott L Mickelsen
Glendon R Miller
Robin M Miller
Marsha E Moon
Eileen M Morgan
Michael A Morris
Jerry Donovan Murphy
Katherine A Naff
Maru A Najera
Marek A Niekrasz
Jane M Olin
Eugene Oliver
Thomas A O'Neil III
Tara G Ooms
Janet Osborne
Mohamed Osman
Beth Page
Dotty G Paquin
Jan V Parker-Thornburg
Cheryl S Pater
Douglas S Penvose
Scott E Perkins
Christopher M Petursson
Anita J Piccolie
Stacy L Pritt
Trisha Putro
Kelly S Roberts
Molly L Romick
Debra J Rood
Judy A Rynkiewicz

Rick Saucedo
Mary Sauer
Kim E Saunders
Robert J Scalese
Leah J Schmidt
Jennifer M Sheehan
Jo Ellen Sherow
Michael G Sidelsky
Patricia J Sikes
Kap C Sin
Scott F Smith
Judith T Snow
Sheryl J Spencer
U Kristina Stephens
Lisa J Steuerwald
Karla Stevens
David Stock
Jennifer Sweet
Socorro C Tauyan
Katrina A Taylor
Ellen R Taylor
Elizabeth Taylor-Farr
Ellen C Teneriello
Jodi M Ternes
Betty R Theriault
Kami J Thompson
Roy M Tietjen
Hisashi Tomita
Jill Tufano
Michelle Tussing
Melissa J Valliere
Mary E Volbert
DeWayne H Walker
Julie A Walls-Honeycutt
Craig L Wardrip
Mary Watach
Christine K Waters
Debra A Weisbecker
Debbie Wells
Paige A Werner
Ruth H Wilder
Kathleen H Wilkinson
Thomas E Work
Michelle K Wyland-O'Brien
Leopold M Yanas
Lynn Zeltman
Gene Logic
KPT Info Trader
Metro New York Branch
Neighbor to Nation
State of Washington
Temple University/Psychology
UCLA Radiation Oncology

Auction Contributors

We thank the following individuals, companies, organizations, and branches that contributed to the Auction fundraisers during the 2005 AALAS National Meeting in St. Louis.

Animal Specialties and Provisions

Appalachian Branch
Arizona Branch
Arkansas Branch
Shayne C Barlow
Doreen H Bartlett
Betsy L Bashaw
Margaret Batchelder
Deborah A Benner
Paul Berger
Diana M Berger
Catherine Bernstein
BH
Andrew R Blickman
Thomas H Boerschinger
Melissa Bonk
Donald Bordine
Cory F Brayton
Kathleen A Burke
Central Ohio Branch
Kathleen A Christensen
William R Clarke
Colonial Medical Supply
John M Coiro
Kimberly A Collins
Kay D Coole
Ronald Dattoli
Janine M Davenport
Delaware Valley Branch
Helen E Diggs
David J Disselhorst
Nicole E Duffee
Douglas L Ednie
Joy Ellwanger
Michael T Engle

Javelyn R Evans
Mark Fasciano
Florida Branch
Patricia L Foley
Stacy L Forbes
Genevieve Fridland
Linda Germany
Karen Gillum
Ronald W Gordon
Judith S Grisamore
Harlan
Christie L Hart
Gail A Heidbrink
Brenda P Hill
Cicely M Hill
Linda Hills
Ralph E Hornickel
Carol A Hudock
Robert K Jackson
David A Johnson
Melissa A Koenig
Lab Products
Labconco
Laboratory Animal Training Assoc
Valeri Lansford
Tracy A Lewis
M Lynn Loney
Lynx Product Group
Lillian Maggio-Price
John E McCutchen
Jack R McGinley
Leticia H McGuffey
Janice McGuigan
Metro New York Branch
Michigan Branch

Marsha E Moon
Rita F Moore
Myrtle's Rabbitry
National Capital Area Branch
Joseph T Newsome
Jane M Olin
Oregon Branch
Beth Page
Linda M Panepinto
Cheryl S Pater
Cynthia A Pekow
Elizabeth H Pelletier
Scott E Perkins
Priority One Services
Purina Mills—LabDiet
Corby-Lyn Roberts
Scientists Center for Animal Welfare
Shepherd Specialty Papers
Larkin B Slater
Kathleen L Smiler
Judith T Snow
Southern New England Branch
Southern Ohio Branch
Dennis M Stark
Kristina Stephens
Shannon A Stutler
Ellen R Taylor
Tecniplast USA
Ellen C Teneriello
Texas Branch
Ann Tourigny Turner
VetEquip
Jill C Worley